

Artist Brief – Mural Artist Commission

Royal Gwent Hospital, Newport, South Wales
March 2017



Gwent Arts in Health are seeking an experienced mural artist to design and make directly applied artwork to enhance the relatives waiting areas in the Critical Care Unit of the Royal Gwent Hospital, Newport, South Wales.

The Artwork is for two small rooms that are frequently used by our relatives, which are used to deliver updates and information about their loved ones which can often be upsetting. Currently, feedback from our relatives suggest that these clinical spaces could benefit from sympathetic decoration and softening. We would like the designs to incorporate changing seasons, trees, butterflies, flowers with a preference to local scenery if possible, but we are open to suggestions too. The artwork DOES NOT have to cover all of the walls or available space, but can be placed sympathetically as determined by the artist.

The completed pieces must be finished to an agreed standard in terms of quality of work, and it must be able to be cleaned on a regular basis in line with infection control guidelines appropriate to a hospital environment. *Dimensions and photographs of the rooms are included at the end of this document.*

The Artist - We are looking for someone who has had experience in producing murals in public places, is flexible, and is confident engaging with members of the public. The artist must be able to demonstrate:

- Previous mural or equivalent artwork in public places
- A knowledge of suitable materials
- An awareness of infection control
- Previous experience of engaging with members of the public and stakeholders
- Current DBS status and Public Liability Insurance

The Project - The successful artist would be invited to meet former relatives and ICU Staff to discuss potential design ideas for the mural. The artist would then draw up final designs in discussion with these stakeholders, and then create the mural.

Project Considerations

- Only one room can be closed at a time
- The availability of the room is 7am -7pm seven days per week
- Opportunities for patients and staff to be involved in the project are actively encouraged
- If possible the art work needs to be completed in one week due to high usage of the rooms and lack of space for relatives in the unit (to be negotiated on appointment)

Budget - The total amount available for this project for the artist is **£750** to include all time (meetings, engagement, design and production), travel expenses and materials.

Contract -The artist will be engaged by Gwent Arts in Health on a freelance (self employed) basis. A payment of 40% will be made on completion of the design phase, and the remaining 60% on completion of the artworks to an agreed standard. Both payments will be made on receipt of invoices from the artist.

Timescale

On appointment, it is desirable that the artist can meet with the project team within one week, and arrange a further meeting to confirm the designs within 7 days from that point. A timescale to suit all parties will be agreed at this stage however it is desirable that the artworks are complete by 15th May 2017.

To Apply

Please send the following:

- A letter outlining your experience, how you meet the desired criteria and your availability to work in accordance with the timetable above.
- Your CV
- Examples of your work, which can include:
 - Links to websites
 - Jpg images and explanatory text (no more than 5)
- A one page outline of how you would approach the project and a draft budget. You can use images in your outline.

The application must be sent to: Sarah.Goodey@wales.nhs.uk to arrive by **5pm on Fri 24th March**. If you wish to submit by post or by hand please contact us well in advance (5 days) of the deadline.

Selection

The Project Team will consider the applications once all have been received and select a candidate on the strength of their application and the information that they provide. For further information about the project and this brief, please contact:

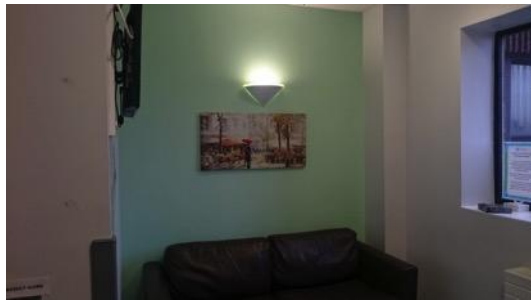
Sarah Goodey, Arts Development Manager
Gwent Arts in Health
C/o Block 10
Royal Gwent Hospital
Cardiff Road
Newport
NP20 4LA

Sarah.Goodey@wales.nhs.uk / 01633 234517 / 07976 375781

Useful information:

- About the Royal Gwent Hospital: <http://www.wales.nhs.uk/sitesplus/866/page/40419>
- More information about the nature of Intensive Care can be found on the **ICUsteps** website (The intensive care patient support charity) <http://www.icusteps.org/>
- Gwent Arts In Health: www.garth.org.uk
- Artists In Hospitals Toolkit: <http://artworks.cymru/Artists-in-Hospitals-Toolkit>
- A reflection on the spaces from a former relative (see below)

Room 1 (Larger)



Room 2 (Smaller)

